

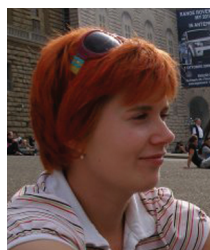
NEW GRADUATES

ESTER ORAS

Tartu Ülikool (University of Tartu), Lossi 3, 51003 Tartu, Estonia; ester.oras@gmail.com

In 2009 six young people were credited the title of professional archaeologists. According to the Bologna system of higher education the profession of archaeologist is given to those who have defended their MA thesis at a higher education institute. Correspondingly, the National Heritage Board has set out general requirements permitting such graduates to apply for the licence of archaeological research issued by the Board and conduct archaeological excavations. Therefore it is worth introducing these young people to a wider audience. Congratulations!

Triin Äärismaa (TLÜ)



Triin defended her MA thesis 'Sotsiaalsed, kultuurilised ja regionaalsed erinevused Eesti laibamatustega kalmistustes 12.–13. sajandil. Võrdlev analüüs nelja leiukoha põhjal' (Eng. 'Social, cultural and regional differences in Estonian inhumation graves in the 12th – 13th centuries AD. Comparative analysis of four archaeological sites') (supervisor prof. Marika Mägi) at the Institute of History, Tallinn University. Her main research topic relates to burial archaeology and Iron Age. From June 2009 she has been working as a curator at the Museum of Rebala Heritage Protection Area. She has been mainly excavating with her supervisor prof. Marika Mägi at Saaremaa Iron Age and medieval sites.

Anti Lillak (TÜ)



Anti's thesis 'Kagu-Eesti asustusmuster rahvasterännuajast viikingiajani (u 450–1050 pKr)' (Eng. 'The settlement pattern in the south-eastern part of Estonia from the Migration Period to the Viking Age (about 450–1050 AD)') (supervisor Heiki Valk) discussed the topic of settlement and fortification systems in Iron Age South-East Estonia. The area called Setumaa is his main interest in many perspectives from history, folklore and ethnology to prehistoric archaeology. Currently Anti works as Executive Director at the newly founded Seto Institute. He has started his PhD studies at the University of Tartu concentrating on Setu identity throughout the history. Anti's main excavation experience comes from the excavations in South Estonia hill forts together with Heiki Valk, but he has also participated in several rescue excavations at settlement sites.



Kristel Kivi (TÜ)

In her thesis 'Uderna küla kesk- ja varauusajal' (Eng. 'The village of Uderna in the Middle Ages and Early Modern Period') (supervisor Marge Konsa) Kristel discussed the topic of historical village, its structure and material culture on the example of the settlement site Uderna (South Estonia). She has been interested in the Iron Age and medieval settlement archaeology and power relations throughout her archaeology studies. She has excavated mainly with her supervisor Marge Konsa and also with Helena Kaldre (TÜ) at various Iron Age burial and fossil field complexes. At the moment she works as a volunteer in Peru.



Tanel Saimre (TÜ)

Tanel's thesis 'Lubjatootmisega seotud muistised ajaloolise Kursi kihelkonna alal ja muististe mikroreljeefi talletamine tahhümeetri abil' (Eng. 'Sites related to lime production in the historic Kursi parish and tachymetric terrain elevation recording of archaeological sites') (supervisor Andres Tvauri) was about lime production facilities and their documentation methods. In his archaeology studies he has taken a deeper interest in more technical and visual matters, which is partly the result of his previous studies of physics. Tanel is very interested in visual, especially film documentation of archaeological fieldwork and he has just started his MA studies at the University of Tromsø (Norway) in Visual Culture Studies.



Silja Möllits (TÜ)

Silja's thesis 'Can Planioli leiukoht Kirde-Hispaania paleoliitilisel maastikul' (Spn. 'Can Planiol – un yacimiento paleolítico del noreste de España') (supervisor prof. Aivar Kriiska) gave an example of international cooperation, discussing mainly the Paleolithic quartz material in Can Planiol (Spain), where she also excavated during her studies in Spain as an exchange student. She is mainly interested in Stone Age material and has been participating at prof. Aivar Kriiska's excavation projects. At the moment Silja is on maternity leave with her small son.



Ester Oras (TÜ)

Ester's thesis 'Eesti keskmise rauaaja peitvarad' (Eng. 'Middle Iron Age wealth deposits in Estonia') (supervisors Ülle Tamla and Ain Mäesalu) discussed the interpretation of wealth deposits. Her main interests relate to issues of ritual and religion in archaeological record, especially in the case of wealth deposits. She has only just started her PhD studies at the University of Cambridge. Her fieldwork experiences in Estonia relate mostly to Iron Age hill forts including the projects organized by Heiki Valk at southern Estonia. In recent years she has taken part in excavations in Iceland (Vatnsfjörður), Sweden (Uppåkra) and Lithuania (Bajorai).